

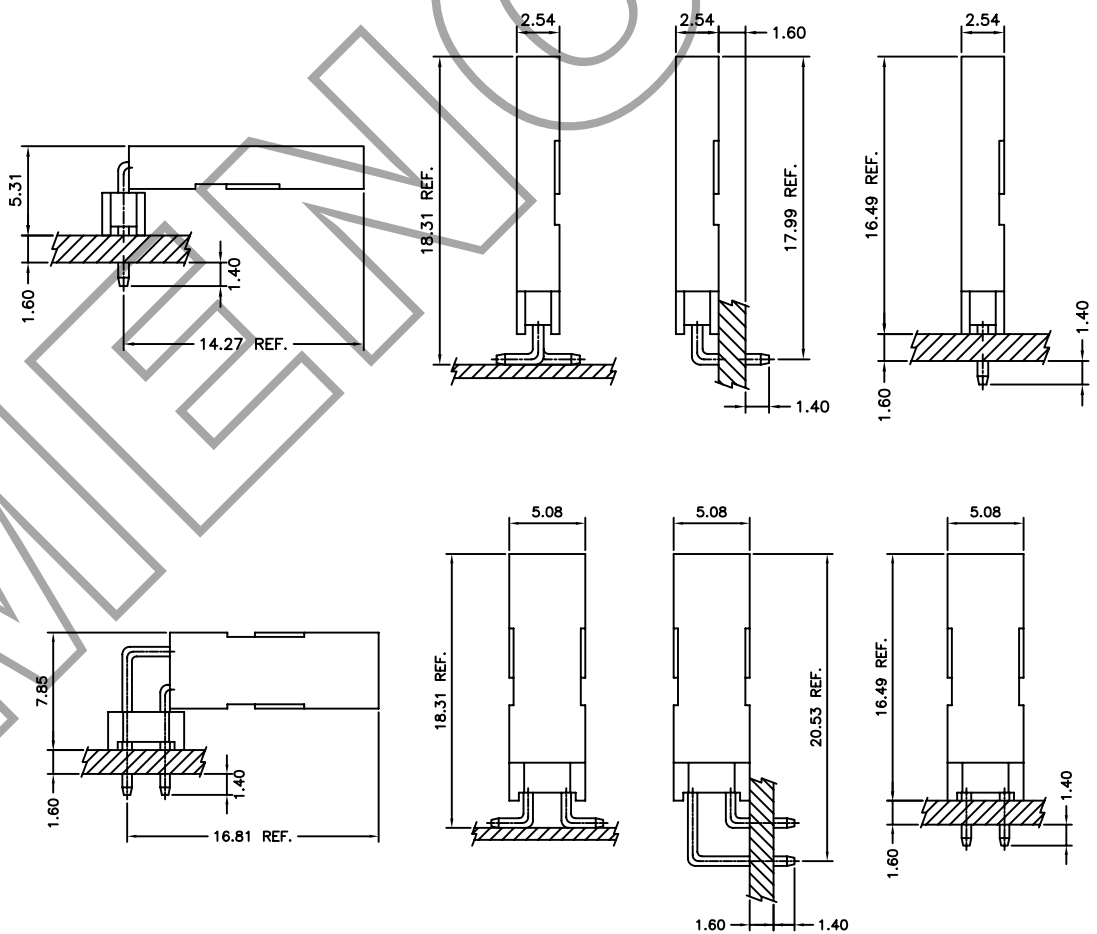
Specifications

Current rating: 3A AC,DC
 Voltage rating: 250V AC,DC
 Temperature range: -40°C ~ +105°C
 Contact resistance: 20mΩ Max.
 Insulation resistance: 100MΩ Min.
 Withstanding voltage: 1000V AC/minute
 Contact E.N for Details

Standards



Assembly layout



Ordering code

A2542M - I P
 ① ② ③④

- ① Series No.
- ① M:Male F:Female
- ② Plating code: T=Tin-plated, G=Gold-flash
- ③ Material: P=Phosphor bronze

A2542 H X - 2XNP
 ① ②③ ④⑤

- ① Series No.
- ② H=Housing
- ③ X=Type A=A type B=B type
- ④ Blank=Single row, 2X=Dual row
- ⑤ No. of circuits

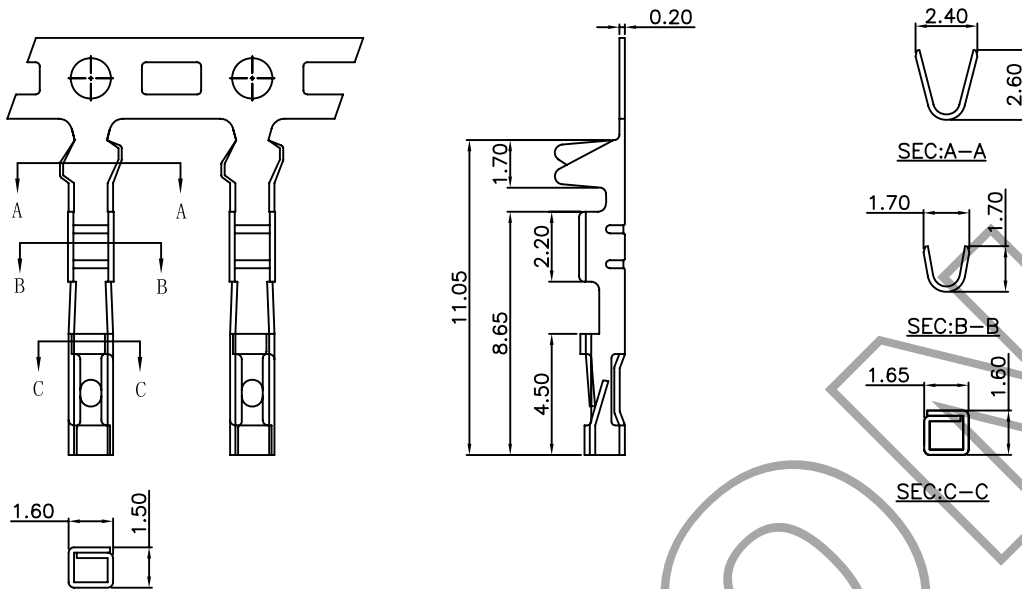
A2542 WR A - S - 2XNP
 ① ② ③ ④ ⑤ ⑥

- ① Series No.
- ② Connector type: WV=Vertical, WR=Right angle
 HV=Vertical Female Header HR=F
 HR=Right angle Female Header
- ③ Blank=Normal type, A=Shell type
- ④ Mounting type: SF=SMT with boss
 S=SMT without boss
- ⑤ Blank=Single row, 2X=Dual row
- ⑥ No. of circuits

A2542F-T — 2.54mm pitch Crimp Terminal

Reference Informations:

*Mates with E.N A2542 series Housing



Ordering Information & Specifications

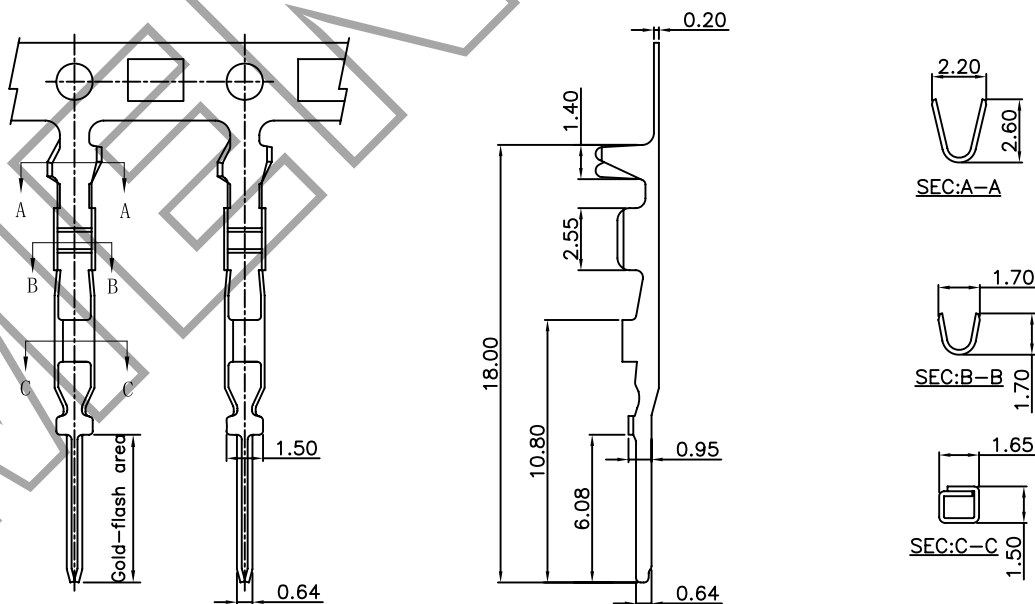
Unit: mm

Part No	Wire Range	Insulation O.D.	Material	Finish	Qty/reel
A2542F-TP	AWG#22-#28	1.90mm(max)	Phosphor Bronze	Tin-plated	10,000pcs
A2542F-GT	AWG#22-#28	1.90mm(max)	Phosphor Bronze	Gold-plated	10,000pcs

A2542M-T — 2.54mm pitch Crimp Terminal

Reference Informations:

*Mates with E.N A2542 series Housing



Ordering Information & Specifications

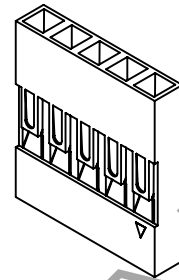
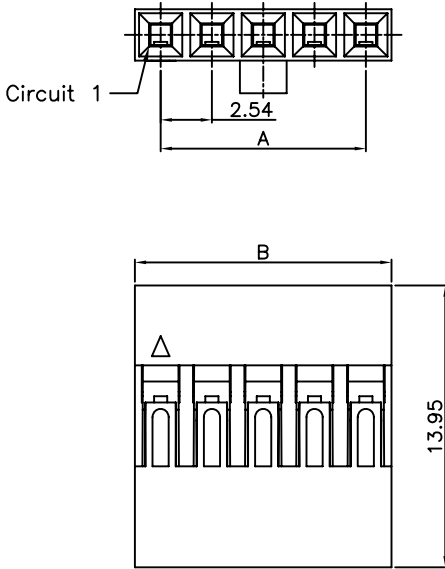
Unit: mm

Part No	Wire Range	Insulation O.D.	Material	Finish	Qty/reel
A2542M-TP	AWG#22-#28	1.90mm(max)	Phosphor Bronze	Tin-plated	10,000pcs
A2542M-GT	AWG#22-#28	1.90mm(max)	Phosphor Bronze	Gold-plated	10,000pcs

A2542-H 2.54mm pitch Housing

Reference Informations:

- *Material: PBT,UL94V-0
- *Suitable E.N A2542 series Terminal
- *Mates with E.N A2542 series Wafer



Ordering Information & Dimensions

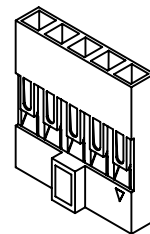
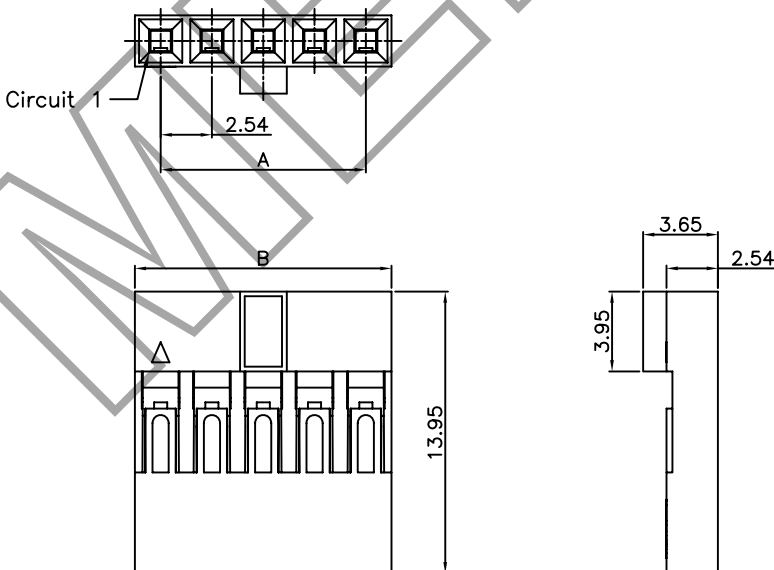
PART NO.	Dimensions	
	A	B
A2542H-02P	2.54	5.08
A2542H-03P	5.08	7.60
A2542H-04P	7.62	10.16
A2542H-05P	10.16	12.70
A2542H-06P	12.70	15.24
A2542H-07P	15.24	17.78
A2542H-08P	17.78	20.32
A2542H-09P	20.32	22.86
A2542H-10P	22.86	25.40
A2542H-11P	25.40	27.94
A2542H-12P	27.94	30.48
A2542H-13P	30.48	33.02
A2542H-14P	33.02	35.56
A2542H-15P	35.56	38.10
A2542H-16P	38.10	40.64
A2542H-17P	40.64	43.18
A2542H-40P	99.06	101.60

Unit: mm

A2542HD 2.54mm pitch Housing

Reference Informations:

- *Material: PBT,UL94V-0
- *Suitable E.N A2542 series Terminal
- *Mates with E.N A2542 series Wafer



Ordering Information & Dimensions

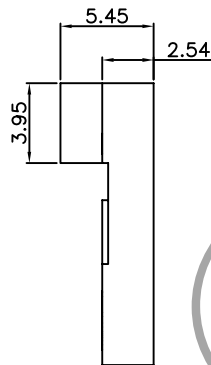
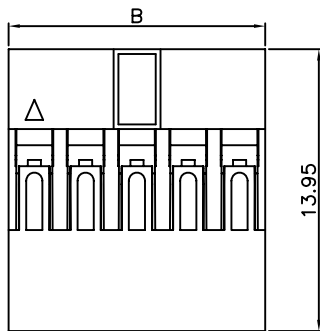
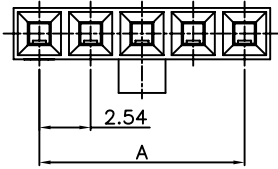
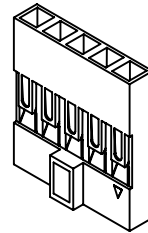
PART NO.	Dimensions	
	A	B
A2542HD-02P	2.54	5.08
A2542HD-03P	5.08	7.60
A2542HD-04P	7.62	10.16
A2542HD-05P	10.16	12.70
A2542HD-06P	12.70	15.24
A2542HD-07P	15.24	17.78
A2542HD-08P	17.78	20.32
A2542HD-09P	20.32	22.86
A2542HD-10P	22.86	25.40
A2542HD-11P	25.40	27.94
A2542HD-12P	27.94	30.48
A2542HD-13P	30.48	33.02
A2542HD-14P	33.02	35.56
A2542HD-15P	35.56	38.10
A2542HD-16P	38.10	40.64
A2542HD-17P	40.64	43.18
A2542HD-30P	99.06	101.60

Unit: mm

A2542HN — 2.54mm pitch Housing

Reference Informations:

- *Material: PBT,UL94V-0
- *Suitable E.N A2542 series Terminal
- *Mates with E.N A2542 series Wafer



Ordering Information & Dimensions

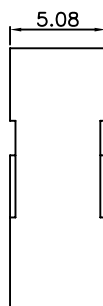
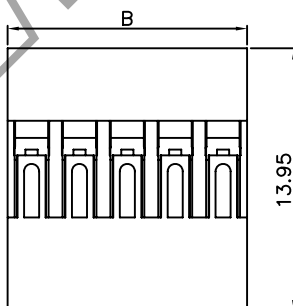
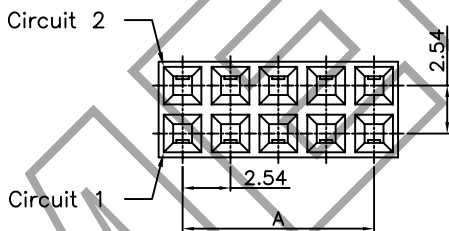
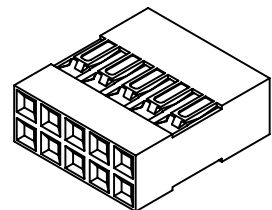
PART NO.	Dimensions	
	A	B
A2542HN-02P	2.54	5.08
A2542HN-03P	5.08	7.60
A2542HN-04P	7.62	10.16
A2542HN-05P	10.16	12.70
A2542HN-06P	12.70	15.24
A2542HN-07P	15.24	17.78
A2542HN-08P	17.78	20.32
A2542HN-09P	20.32	22.86
A2542HN-10P	22.86	25.40
A2542HD-11P	25.40	27.94
A2542HN-12P	27.94	30.48
A2542HN-13P	30.48	33.02
A2542HN-14P	33.02	35.56
A2542HN-15P	35.56	38.10
A2542HN-16P	38.10	40.64
A2542HN-17P	40.64	43.18
A2542HN-40P	99.06	101.60

Unit: mm

A2542H-2X — 2.54mm pitch Dual Row Housing

Reference Informations:

- *Material: PA66,UL94V-2
- *Suitable E.N A2542 series Terminal
- *Mates with E.N A2542 series Dual Row Wafer



Ordering Information & Dimensions

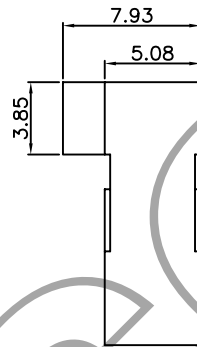
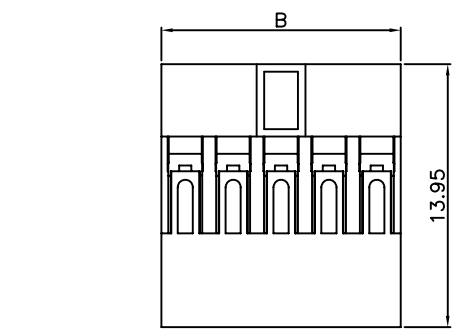
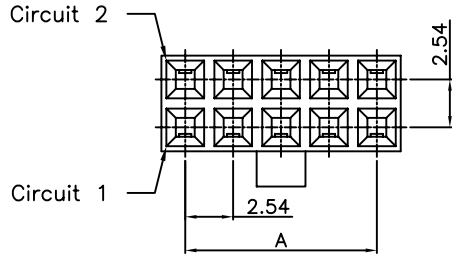
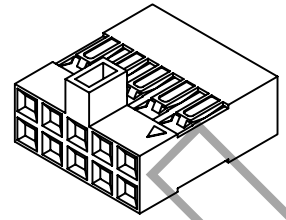
PART NO.	Dimensions	
	A	B
A2542H-02X02P	2.54	5.08
A2542H-02X03P	5.08	7.60
A2542H-02X04P	7.62	10.16
A2542H-02X05P	10.16	12.70
A2542H-02X06P	12.70	15.24
A2542H-02X07P	15.24	17.78
A2542H-02X08P	17.78	20.32
A2542H-02X09P	20.32	22.86
A2542H-02X10P	22.86	25.40
A2542H-02X11P	25.40	27.94
A2542H-02X12P	27.94	30.48
A2542H-02X13P	30.48	33.02
A2542H-02X14P	33.02	35.56
A2542H-02X15P	35.56	38.10
A2542H-02X16P	38.10	40.64
A2542H-02X17P	40.64	43.18
A2542H-02X40P	99.06	101.60

Unit: mm

A2542HD-2X 2.54mm pitch Dual Row Housing

Reference Informations:

- *Material: PA66,UL94V-2
- *Suitable E.N A2542 series Terminal
- *Mates with E.N A2542 series Dual Row Wafer



Ordering Information & Dimensions

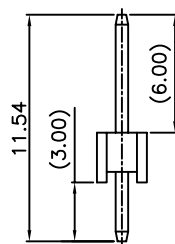
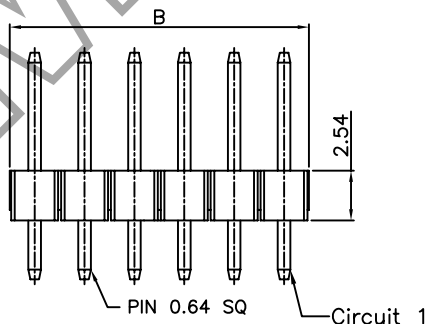
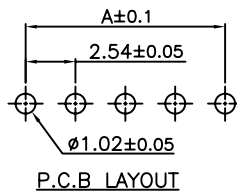
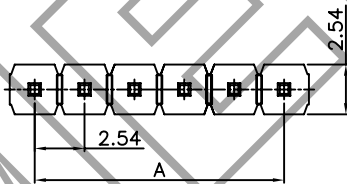
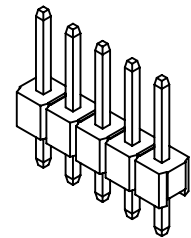
PART NO.	Dimensions	
	A	B
A2542HD-2X02P	2.54	5.08
A2542HD-2X03P	5.08	7.60
A2542HD-2X04P	7.62	10.16
A2542HD-2X05P	10.16	12.70
A2542HD-2X06P	12.70	15.24
A2542HD-2X07P	15.24	17.78
A2542HD-2X08P	17.78	20.32
A2542HD-2X09P	20.32	22.86
A2542HD-2X10P	22.86	25.40
A2542HD-2X11P	25.40	27.94
A2542HD-2X12P	27.94	30.48
A2542HD-2X13P	30.48	33.02
A2542HD-2X14P	33.02	35.56
A2542HD-2X15P	35.56	38.10
A2542HD-2X40P	99.06	101.60

Unit: mm

A2542WV 2.54mm pitch 180° Wafer

Reference Informations:

- *Material: PA6T,UL94V-0
- *Suitable E.N A2542 series Terminal
- *Mates with E.N A2542 series Housing Or Female Header



Ordering Information & Dimensions

PART NO.	Dimensions	
	A	B
A2542WV-02P	2.54	5.08
A2542WV-03P	5.08	7.60
A2542WV-04P	7.62	10.16
A2542WV-05P	10.16	12.70
A2542WV-06P	12.70	15.24
A2542WV-07P	15.24	17.78
A2542WV-08P	17.78	20.32
A2542WV-09P	20.32	22.86
A2542WV-10P	22.86	25.40
A2542WV-11P	25.40	27.94
A2542WV-12P	27.94	30.48
A2542WV-13P	30.48	33.02
A2542WV-14P	33.02	35.56
A2542WV-15P	35.56	38.10
A2542WV-16P	38.10	40.64
A2542WV-17P	40.64	43.18
A2542WV-40P	99.06	101.60

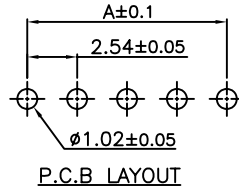
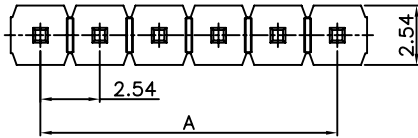
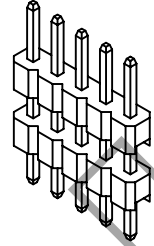
Unit: mm

A2542WVA

2.54mm pitch 180° Wafer

Reference Informations:

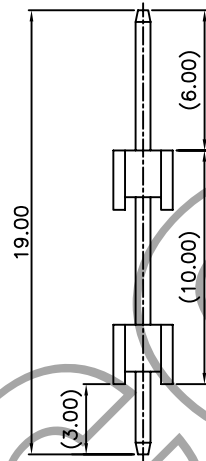
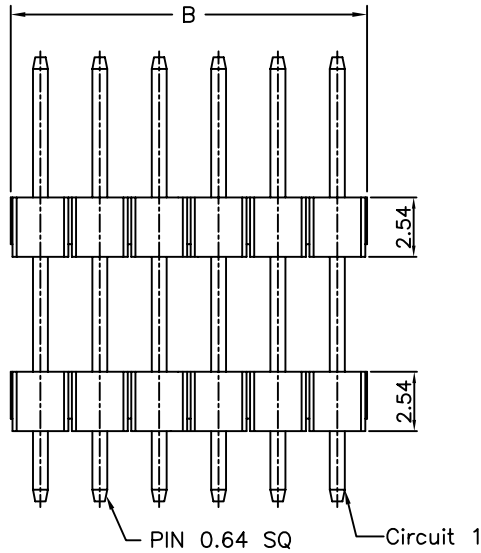
- *Material: PA6T,UL94V-0
- *Suitable E.N A2542 series Terminal
- *Mates with E.N A2542 series Housing Or Female Header



Ordering Information & Dimensions

PART NO.	Dimensions	
	A	B
A2542WVA-02P	2.54	5.08
A2542WVA-03P	5.08	7.60
A2542WVA-04P	7.62	10.16
A2542WVA-05P	10.16	12.70
A2542WVA-06P	12.70	15.24
A2542WVA-07P	15.24	17.78
A2542WVA-08P	17.78	20.32
A2542WVA-09P	20.32	22.86
A2542WVA-10P	22.86	25.40
A2542WVA-11P	25.40	27.94
A2542WVA-12P	27.94	30.48
A2542WVA-13P	30.48	33.02
A2542WVA-14P	33.02	35.56
A2542WVA-15P	35.56	38.10
A2542WVA-16P	38.10	40.64
A2542WVA-17P	40.64	43.18
A2542WVA-40P	99.06	101.60

Unit: mm

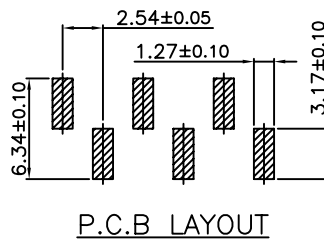
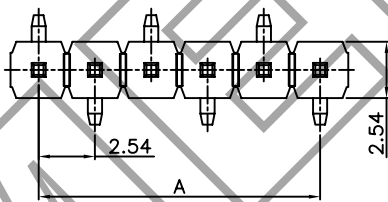
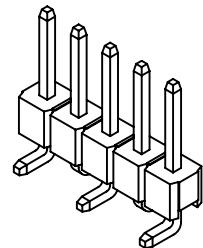


A2542WV-S

2.54mm pitch 180° Wafer - SMT TYPE

Reference Informations:

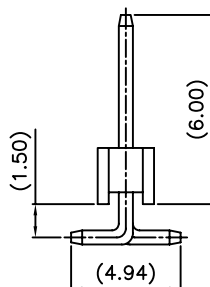
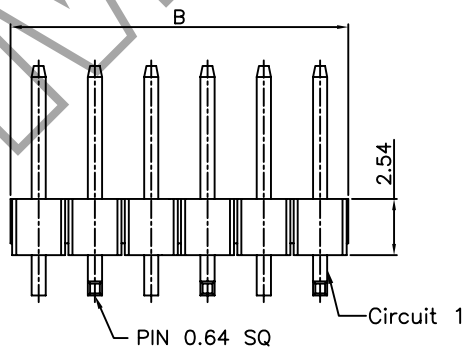
- *Material: PA6T,UL94V-0
- *Suitable E.N A2542 series Terminal
- *Mates with E.N A2542 series Housing Or Female Header



Ordering Information & Dimensions

PART NO.	Dimensions	
	A	B
A2542WV-S-02P	2.54	5.08
A2542WV-S-03P	5.08	7.60
A2542WV-S-04P	7.62	10.16
A2542WV-S-05P	10.16	12.70
A2542WV-S-06P	12.70	15.24
A2542WV-S-07P	15.24	17.78
A2542WV-S-08P	17.78	20.32
A2542WV-S-09P	20.32	22.86
A2542WV-S-10P	22.86	25.40
A2542WV-S-11P	25.40	27.94
A2542WV-S-12P	27.94	30.48
A2542WV-S-13P	30.48	33.02
A2542WV-S-14P	33.02	35.56
A2542WV-S-15P	35.56	38.10
A2542WV-S-16P	38.10	40.64
A2542WV-S-17P	40.64	43.18
A2542WV-S-40P	99.06	101.60

Unit: mm

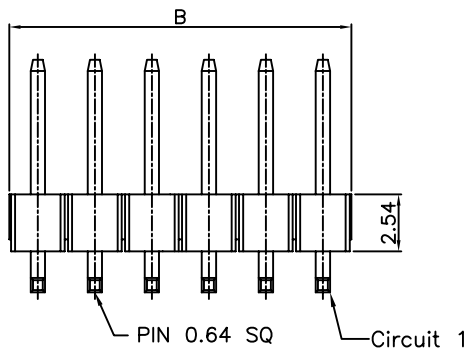
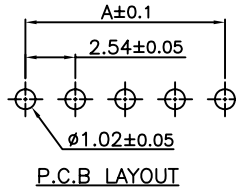
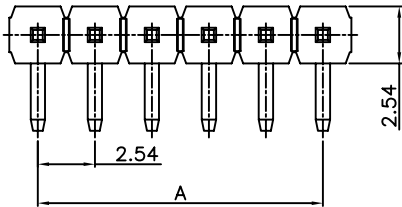
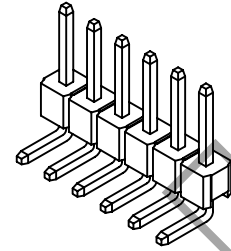


A2542WR

2.54mm pitch 90° Wafer

Reference Informations:

- *Material: PA6T,UL94V-0
- *Suitable E.N A2542 series Terminal
- *Mates with E.N A2542 series Housing Or Female Header



Ordering Information & Dimensions

PART NO.	Dimensions	
	A	B
A2542WR-02P	2.54	5.08
A2542WR-03P	5.08	7.60
A2542WR-04P	7.62	10.16
A2542WR-05P	10.16	12.70
A2542WR-06P	12.70	15.24
A2542WR-07P	15.24	17.78
A2542WR-08P	17.78	20.32
A2542WR-09P	20.32	22.86
A2542WR-10P	22.86	25.40
A2542WR-11P	25.40	27.94
A2542WR-12P	27.94	30.48
A2542WR-13P	30.48	33.02
A2542WR-14P	33.02	35.56
A2542WR-15P	35.56	38.10
A2542WR-16P	38.10	40.64
A2542WR-17P	40.64	43.18
A2542WR-40P	99.06	101.60

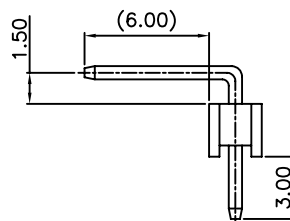
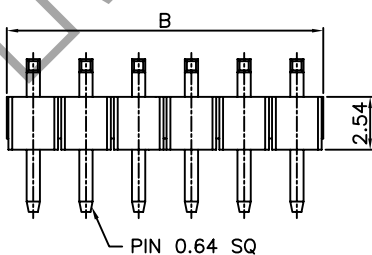
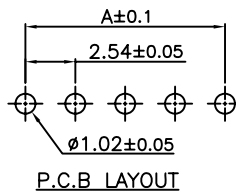
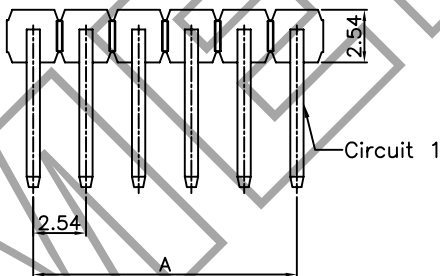
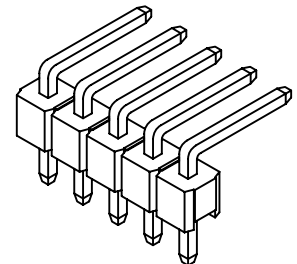
Unit: mm

A2542WRA

2.54mm pitch 90° Wafer

Reference Informations:

- *Material: PA6T,UL94V-0
- *Suitable E.N A2542 series Terminal
- *Mates with E.N A2542 series Housing Or Female Header



Ordering Information & Dimensions

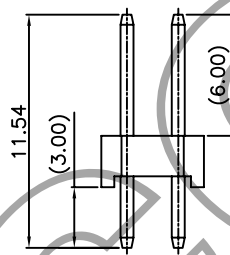
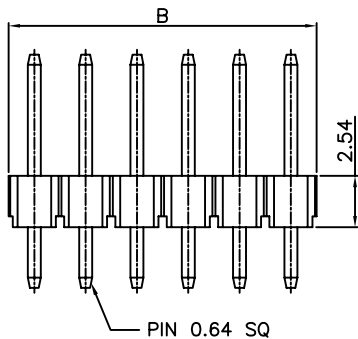
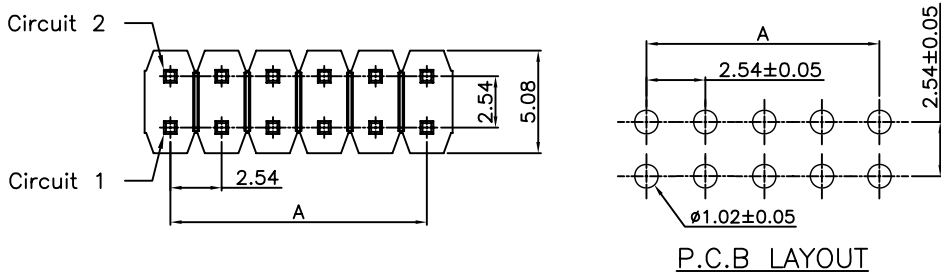
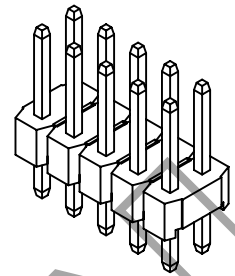
PART NO.	Dimensions	
	A	B
A2542WRA-02P	2.54	5.08
A2542WRA-03P	5.08	7.60
A2542WRA-04P	7.62	10.16
A2542WRA-05P	10.16	12.70
A2542WRA-06P	12.70	15.24
A2542WRA-07P	15.24	17.78
A2542WRA-08P	17.78	20.32
A2542WRA-09P	20.32	22.86
A2542WRA-10P	22.86	25.40
A2542WRA-11P	25.40	27.94
A2542WRA-12P	27.94	30.48
A2542WRA-13P	30.48	33.02
A2542WRA-14P	33.02	35.56
A2542WRA-15P	35.56	38.10
A2542WRA-16P	38.10	40.64
A2542WRA-17P	40.64	43.18
A2542WRA-40P	99.06	101.60

Unit: mm

A2542WV-2X — 2.54mm pitch 180° Dual Row Wafer

Reference Informations:

- *Material: Pin: Brass/Tin-plated
Wafer: PA6T,UL94V-0
- *Mates with E.N A2542 series Dual Row Housing
Or Dual Row Female Header



Ordering Information & Dimensions

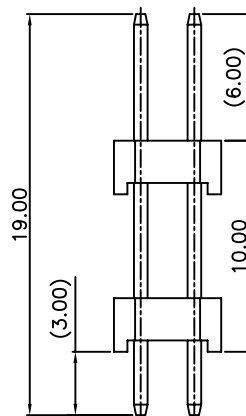
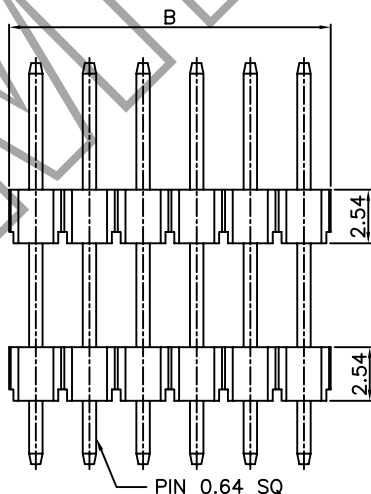
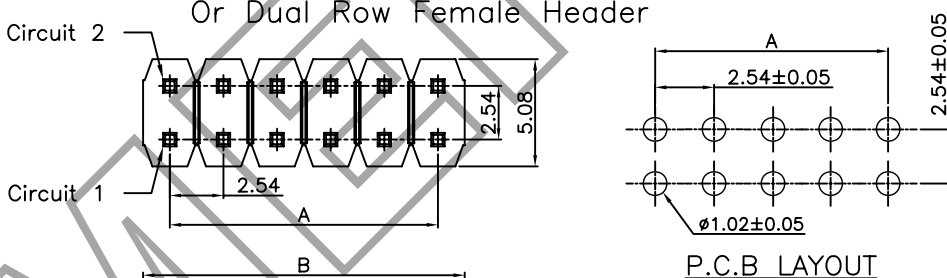
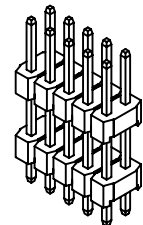
PART NO.	Dimensions	
	A	B
A2542WV-2X02P	2.54	5.08
A2542WV-2X03P	5.08	7.60
A2542WV-2X04P	7.62	10.16
A2542WV-2X05P	10.16	12.70
A2542WV-2X06P	12.70	15.24
A2542WV-2X07P	15.24	17.78
A2542WV-2X08P	17.78	20.32
A2542WV-2X09P	20.32	22.86
A2542WV-2X10P	22.86	25.40
A2542WV-2X11P	25.40	27.94
A2542WV-2X12P	27.94	30.48
A2542WV-2X13P	30.48	33.02
A2542WV-2X14P	33.02	35.56
A2542WV-2X15P	35.56	38.10
A2542WV-2X16P	38.10	40.64
A2542WV-2X17P	40.64	43.18
A2542WV-2X40P	99.06	101.60

Unit: mm

A2542WVA-2X — 2.54mm pitch 90° Dual Row Wafer

Reference Informations:

- *Material: Pin: Brass/Tin-plated
Wafer: PA6T,UL94V-0
- *Mates with E.N A2542 series Dual Row Housing
Or Dual Row Female Header



Ordering Information & Dimensions

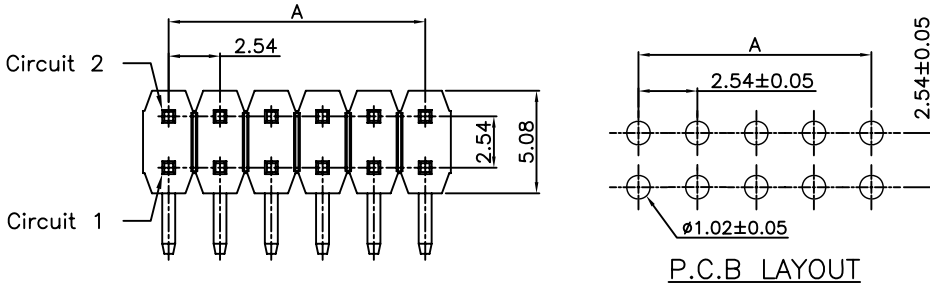
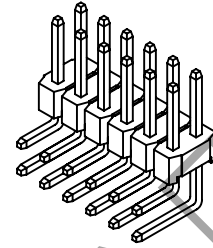
PART NO.	Dimensions	
	A	B
A2542WVA-2X02P	2.54	5.08
A2542WVA-2X03P	5.08	7.60
A2542WVA-2X04P	7.62	10.16
A2542WVA-2X05P	10.16	12.70
A2542WVA-2X06P	12.70	15.24
A2542WVA-2X07P	15.24	17.78
A2542WVA-2X08P	17.78	20.32
A2542WVA-2X09P	20.32	22.86
A2542WVA-2X10P	22.86	25.40
A2542WVA-2X11P	25.40	27.94
A2542WVA-2X12P	27.94	30.48
A2542WVA-2X13P	30.48	33.02
A2542WVA-2X14P	33.02	35.56
A2542WVA-2X15P	35.56	38.10
A2542WVA-2X16P	38.10	40.64
A2542WVA-2X17P	40.64	43.18
A2542WVA-2X40P	99.06	101.60

Unit: mm

A2542WR-2X — 2.54mm pitch 90° Dual Row Wafer

Reference Informations:

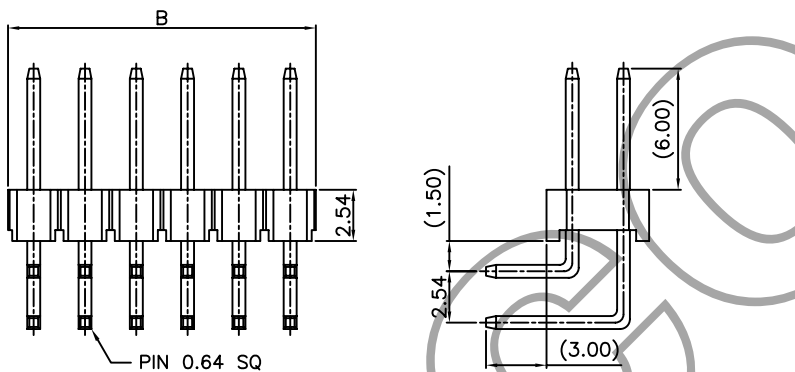
- *Material: Pin: Brass/Tin-plated
Wafer: PA6T,UL94V-0
- *Mates with E.N A2542 series Dual Row Housing
Or Dual Row Female Header



Ordering Information & Dimensions

PART NO.	Dimensions	
	A	B
A2542WR-2X02P	2.54	5.08
A2542WR-2X03P	5.08	7.60
A2542WR-2X04P	7.62	10.16
A2542WR-2X05P	10.16	12.70
A2542WR-2X06P	12.70	15.24
A2542WR-2X07P	15.24	17.78
A2542WR-2X08P	17.78	20.32
A2542WR-2X09P	20.32	22.86
A2542WR-2X10P	22.86	25.40
A2542WR-2X11P	25.40	27.94
A2542WR-2X12P	27.94	30.48
A2542WR-2X13P	30.48	33.02
A2542WR-2X14P	33.02	35.56
A2542WR-2X15P	35.56	38.10
A2542WR-2X16P	38.10	40.64
A2542WR-2X17P	40.64	43.18
A2542WR-2X40P	99.06	101.60

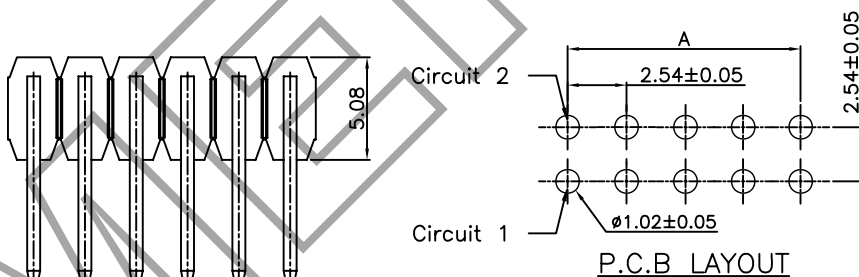
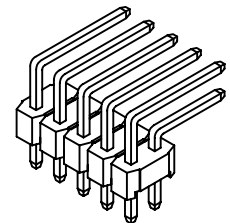
Unit: mm



A2542WRA-2X — 2.54mm pitch 90° Dual Row Wafer

Reference Informations:

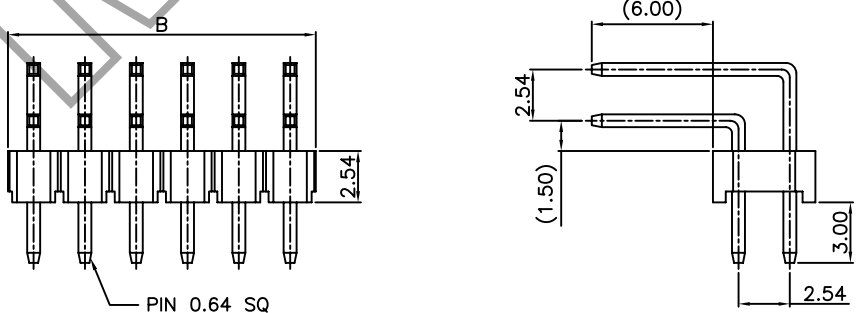
- *Material: Pin: Brass/Tin-plated
Wafer: PA6T,UL94V-0
- *Mates with E.N A2542 series Dual Row Housing
Or Dual Row Female Header



Ordering Information & Dimensions

PART NO.	Dimensions	
	A	B
A2542WRA-2X02P	2.54	5.08
A2542WRA-2X03P	5.08	7.60
A2542WRA-2X04P	7.62	10.16
A2542WRA-2X05P	10.16	12.70
A2542WRA-2X06P	12.70	15.24
A2542WRA-2X07P	15.24	17.78
A2542WRA-2X08P	17.78	20.32
A2542WRA-2X09P	20.32	22.86
A2542WRA-2X10P	22.86	25.40
A2542WRA-2X11P	25.40	27.94
A2542WRA-2X12P	27.94	30.48
A2542WRA-2X13P	30.48	33.02
A2542WRA-2X14P	33.02	35.56
A2542WRA-2X15P	35.56	38.10
A2542WRA-2X16P	38.10	40.64
A2542WRA-2X17P	40.64	43.18
A2542WRA-2X40P	99.06	101.60

Unit: mm

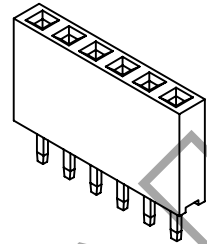
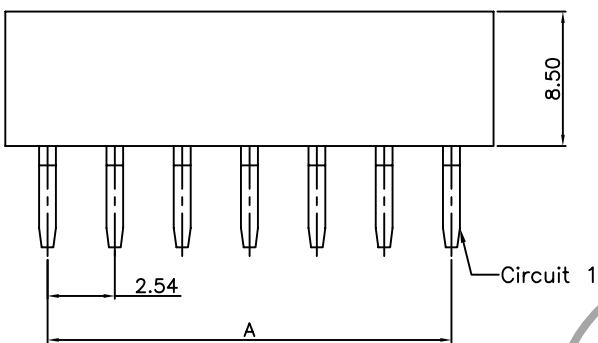
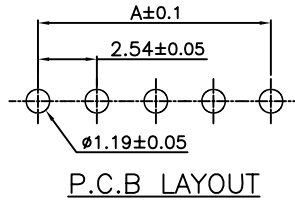
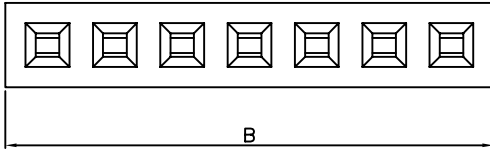


A2542HV

2.54mm pitch 180° Female Header

Reference Informations:

- *Material: Pin: Brass/Tin-plated
Wafer: PBT,UL94V-0
- *Mates with E.N A2542 series Wafer



Ordering Information & Dimensions

PART NO.	Dimensions	
	A	B
A2542HV-02P	2.54	5.58
A2542HV-03P	5.08	8.12
A2542HV-04P	7.62	10.66
A2542HV-05P	10.16	13.20
A2542HV-06P	12.70	15.74
A2542HV-07P	15.24	18.28
A2542HV-08P	17.78	20.82
A2542HV-09P	20.32	23.36
A2542HV-10P	22.86	25.90
A2542HV-11P	25.40	28.44
A2542HV-12P	27.94	30.98
A2542HV-13P	30.48	33.52
A2542HV-14P	33.02	36.06
A2542HV-15P	35.56	38.60
A2542HV-16P	38.10	41.14
A2542HV-17P	40.64	43.68
A2542HV-40P	99.06	102.20

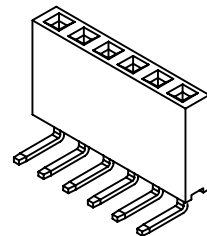
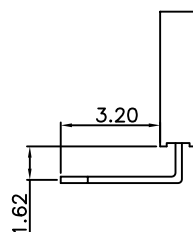
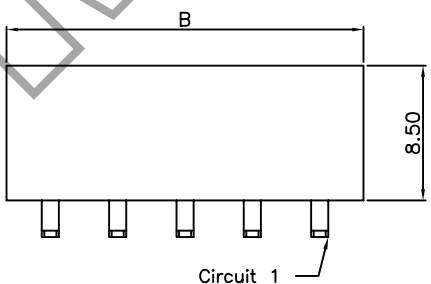
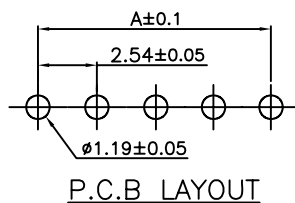
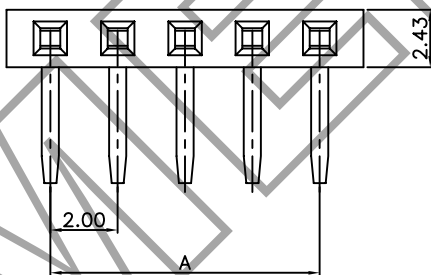
Unit: mm

A2542HR

2.54mm pitch 90° Female Header

Reference Informations:

- *Material: Pin: Brass/Tin-plated
Wafer: PBT,UL94V-0
- *Mates with E.N A2542 series Wafer



Ordering Information & Dimensions

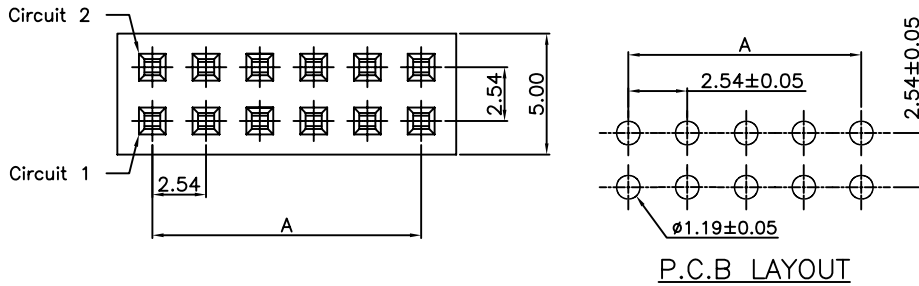
PART NO.	Dimensions	
	A	B
A2542HR-02P	2.54	5.58
A2542HR-03P	5.08	8.12
A2542HR-04P	7.62	10.66
A2542HR-05P	10.16	13.20
A2542HR-06P	12.70	15.74
A2542HR-07P	15.24	18.28
A2542HR-08P	17.78	20.82
A2542HR-09P	20.32	23.36
A2542HR-10P	22.86	25.90
A2542HR-11P	25.40	28.44
A2542HR-12P	27.94	30.98
A2542HR-13P	30.48	33.52
A2542HR-14P	33.02	36.06
A2542HR-15P	35.56	38.60
A2542HR-16P	38.10	41.14
A2542HR-17P	40.64	43.68
A2542HR-40P	99.06	102.20

Unit: mm

A2542HV-2X — 2.54mm pitch 90° Dual Row Female Header

Reference Informations:

- *Material: Pin: Brass/Tin-plated
Wafer: PBT,UL94V-0
- *Mates with E.N A2542 series Dual Row Wafer



Ordering Information & Dimensions

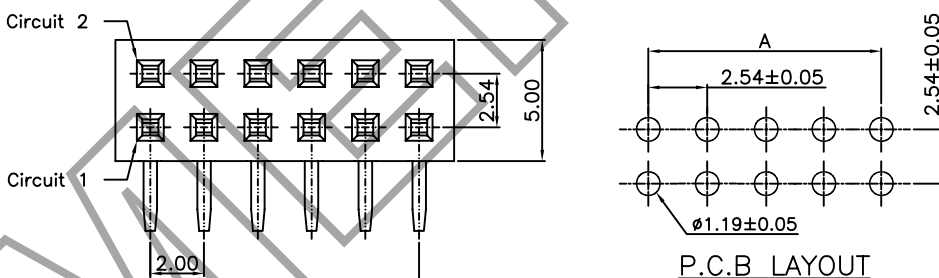
PART NO.	Dimensions	
	A	B
A2542HV-2X02P	2.54	5.58
A2542HV-2X03P	5.08	8.12
A2542HV-2X04P	7.62	10.66
A2542HV-2X05P	10.16	13.20
A2542HV-2X06P	12.70	15.74
A2542HV-2X07P	15.24	18.28
A2542HV-2X08P	17.78	20.82
A2542HV-2X09P	20.32	23.36
A2542HV-2X10P	22.86	25.90
A2542HV-2X11P	25.40	28.44
A2542HV-2X12P	27.94	30.98
A2542HV-2X13P	30.48	33.52
A2542HV-2X14P	33.02	36.06
A2542HV-2X15P	35.56	38.60
A2542HV-2X16P	38.10	41.14
A2542HV-2X17P	40.64	43.68
A2542HV-2X40P	99.06	102.20

Unit: mm

A2542HR-2X — 2.54mm pitch 90° Dual Row Female Header

Reference Informations:

- *Material: Pin: Brass/Tin-plated
Wafer: PBT,UL94V-0
- *Mates with E.N A2542 series Dual Row Wafer



Ordering Information & Dimensions

PART NO.	Dimensions	
	A	B
A2542HR-2X02P	2.54	5.58
A2542HR-2X03P	5.08	8.12
A2542HR-2X04P	7.62	10.66
A2542HR-2X05P	10.16	13.20
A2542HR-2X06P	12.70	15.74
A2542HR-2X07P	15.24	18.28
A2542HR-2X08P	17.78	20.82
A2542HR-2X09P	20.32	23.36
A2542HR-2X10P	22.86	25.90
A2542HR-2X11P	25.40	28.44
A2542HR-2X12P	27.94	30.98
A2542HR-2X13P	30.48	33.52
A2542HR-2X14P	33.02	36.06
A2542HR-2X15P	35.56	38.60
A2542HR-2X16P	38.10	41.14
A2542HR-2X17P	40.64	43.68
A2542HR-2X40P	99.06	102.20

Unit: mm